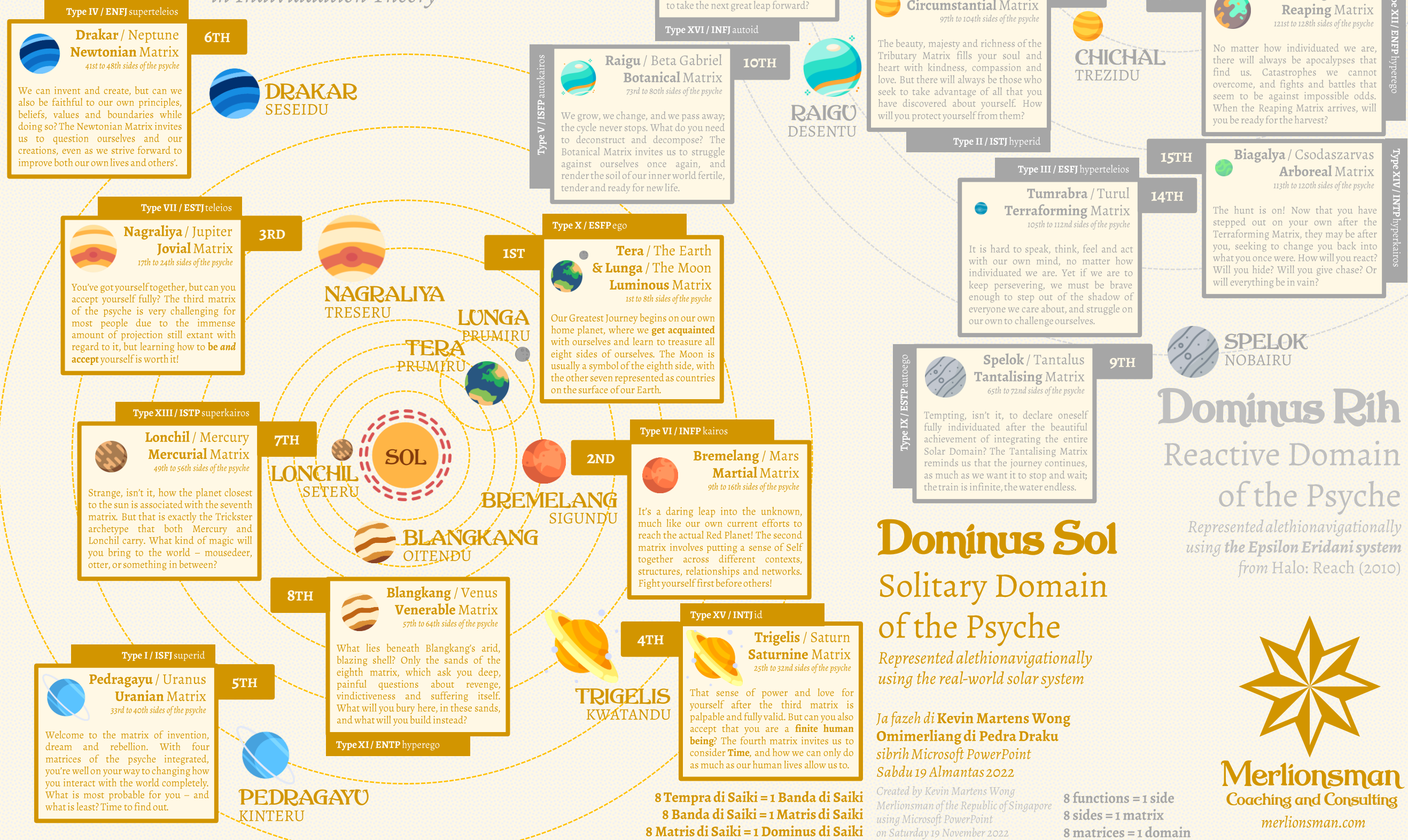


Karta

pra jenti teng / for people with Type X / ESFP ego

Dominus Prumiru kung Sigundu di Saiki

A Map of the First and Second Domains of the Psyche in Individuation Theory



Type VIII / ENTJ autoteleios
Kaskung / Emese Mesmerising Matrix
81st to 88th sides of the psyche
 Do you fear Death? There is no going any further if you have yet to conquer your fear of what awaits you if you were to lose everything and everyone that you care about, every part of yourself. What are you willing to sacrifice for others? And what will that change about you?

11TH
Makantra / Tribute Tributary Matrix
89th to 96th sides of the psyche
 The name of the Matrix should say it all. Paying tribute to ourselves and honouring ourselves, every single part of us, both good and bad, is one of the hardest things that we will ever do. It might even be a paradox. Are you ready to take the next great leap forward?
Type XVI / INFJ autoid

KASKUNG ONZIDU
MAKANTRA DOZIDU
12TH
Chichal / Circumstance Circumstantial Matrix
97th to 104th sides of the psyche
 The beauty, majesty and richness of the Tributary Matrix fills your soul and heart with kindness, compassion and love. But there will always be those who seek to take advantage of all that you have discovered about yourself. How will you protect yourself from them?
Type II / ISTJ hyperid

RIH
TUMRABRA KATZIDU
KAMBURONG DISEIDU
16TH
Kamburong / Reach Reaping Matrix
121st to 128th sides of the psyche
 No matter how individuated we are, there will always be apocalypses that find us. Catastrophes we cannot overcome, and fights and battles that seem to be against impossible odds. When the Reaping Matrix arrives, will you be ready for the harvest?
Type XII / ENFP hyperego

Type IV / ENFJ superteleios
Drakar / Neptune Newtonian Matrix
41st to 48th sides of the psyche
 We can invent and create, but can we also be faithful to our own principles, beliefs, values and boundaries while doing so? The Newtonian Matrix invites us to question ourselves and our creations, even as we strive forward to improve both our own lives and others'.
6TH
DRAKAR SESEIDU

Type V / ISFP autokairos
Raigu / Beta Gabriel Botanical Matrix
73rd to 80th sides of the psyche
 We grow, we change, and we pass away, the cycle never stops. What do you need to deconstruct and decompose? The Botanical Matrix invites us to struggle against ourselves once again, and render the soil of our inner world fertile, tender and ready for new life.
10TH
RAIGU DESENTU

Type VII / ESTJ teleios
Nagraliya / Jupiter Jovial Matrix
17th to 24th sides of the psyche
 You've got yourself together, but can you accept yourself fully? The third matrix of the psyche is very challenging for most people due to the immense amount of projection still extant with regard to it, but learning how to **be and accept** yourself is worth it!
3RD
NAGRALIYA TRESERU

Type X / ESFP ego
Tera / The Earth & Lunga / The Moon Luminous Matrix
1st to 8th sides of the psyche
 Our Greatest Journey begins on our own home planet, where we **get acquainted** with ourselves and learn to treasure all eight sides of ourselves. The Moon is usually a symbol of the eighth side, with the other seven represented as countries on the surface of our Earth.
1ST
TERA PRUMIRU
LUNGA PRUMIRU

Type III / ESFJ hyperteleios
Tumrabra / Turul Terraforming Matrix
105th to 112nd sides of the psyche
 It is hard to speak, think, feel and act with our own mind, no matter how individuated we are. Yet if we are to keep persevering, we must be brave enough to step out of the shadow of everyone we care about, and struggle on our own to challenge ourselves.
14TH

15TH
Biagalya / Csodaszarvas Arboreal Matrix
113th to 120th sides of the psyche
 The hunt is on! Now that you have stepped out on your own after the Terraforming Matrix, they may be after you, seeking to change you back into what you once were. How will you react? Will you hide? Will you give chase? Or will everything be in vain?
Type XIV / INTP hyperkairos

Type XIII / ISTP superkairos
Lonchil / Mercury Mercurial Matrix
49th to 56th sides of the psyche
 Strange, isn't it, how the planet closest to the sun is associated with the seventh matrix. But that is exactly the Trickster archetype that both Mercury and Lonchil carry. What kind of magic will you bring to the world – mousedeer, otter, or something in between?
7TH
LONCHIL SETERU

Type VI / INFP kairos
Bremelang / Mars Martial Matrix
9th to 16th sides of the psyche
 It's a daring leap into the unknown, much like our own current efforts to reach the actual Red Planet! The second matrix involves putting a sense of Self together across different contexts, structures, relationships and networks. Fight yourself first before others!
2ND
BREMELANG SIGUNDU

Type IX / ESTP autotego
Spelok / Tantalus Tantalising Matrix
65th to 72nd sides of the psyche
 Tempting, isn't it, to declare oneself fully individuated after the beautiful achievement of integrating the entire Solar Domain? The Tantalising Matrix reminds us that the journey continues, as much as we want it to stop and wait; the train is infinite, the water endless.
9TH
SPELOK NOBAIRU

Dominus Rih
 Reactive Domain of the Psyche
Represented alethionavigationally using the Epsilon Eridani system from Halo: Reach (2010)

Type I / ISFJ superid
Pedragayu / Uranus Uranian Matrix
33rd to 40th sides of the psyche
 Welcome to the matrix of invention, dream and rebellion. With four matrices of the psyche integrated, you're well on your way to changing how you interact with the world completely. What is most probable for you – and what is least? Time to find out.
5TH
PEDRAGAYU KINTERU

8TH
Blangkang / Venus Venerable Matrix
57th to 64th sides of the psyche
 What lies beneath Blangkang's arid, blazing shell? Only the sands of the eighth matrix, which ask you deep, painful questions about revenge, vindictiveness and suffering itself. What will you bury here, in these sands, and what will you build instead?
Type XI / ENTP hyperego

Type XV / INTJ id
Trigelis / Saturn Saturnine Matrix
25th to 32nd sides of the psyche
 That sense of power and love for yourself after the third matrix is palpable and fully valid. But can you also accept that you are a **finite human being**? The fourth matrix invites us to consider **Time**, and how we can only do as much as our human lives allow us to.
4TH
TRIGELIS KWATANDU

Dominus Sol
 Solitary Domain of the Psyche
Represented alethionavigationally using the real-world solar system

8 Tempra di Saiki = 1 Banda di Saiki
8 Banda di Saiki = 1 Matris di Saiki
8 Matris di Saiki = 1 Dominus di Saiki

Ja fazeh di Kevin Martens Wong Omimerliang di Pedra Draku sibrih Microsoft PowerPoint Sabdu 19 Almantas 2022

Created by Kevin Martens Wong Merlionsman of the Republic of Singapore using Microsoft PowerPoint on Saturday 19 November 2022

8 functions = 1 side
8 sides = 1 matrix
8 matrices = 1 domain

