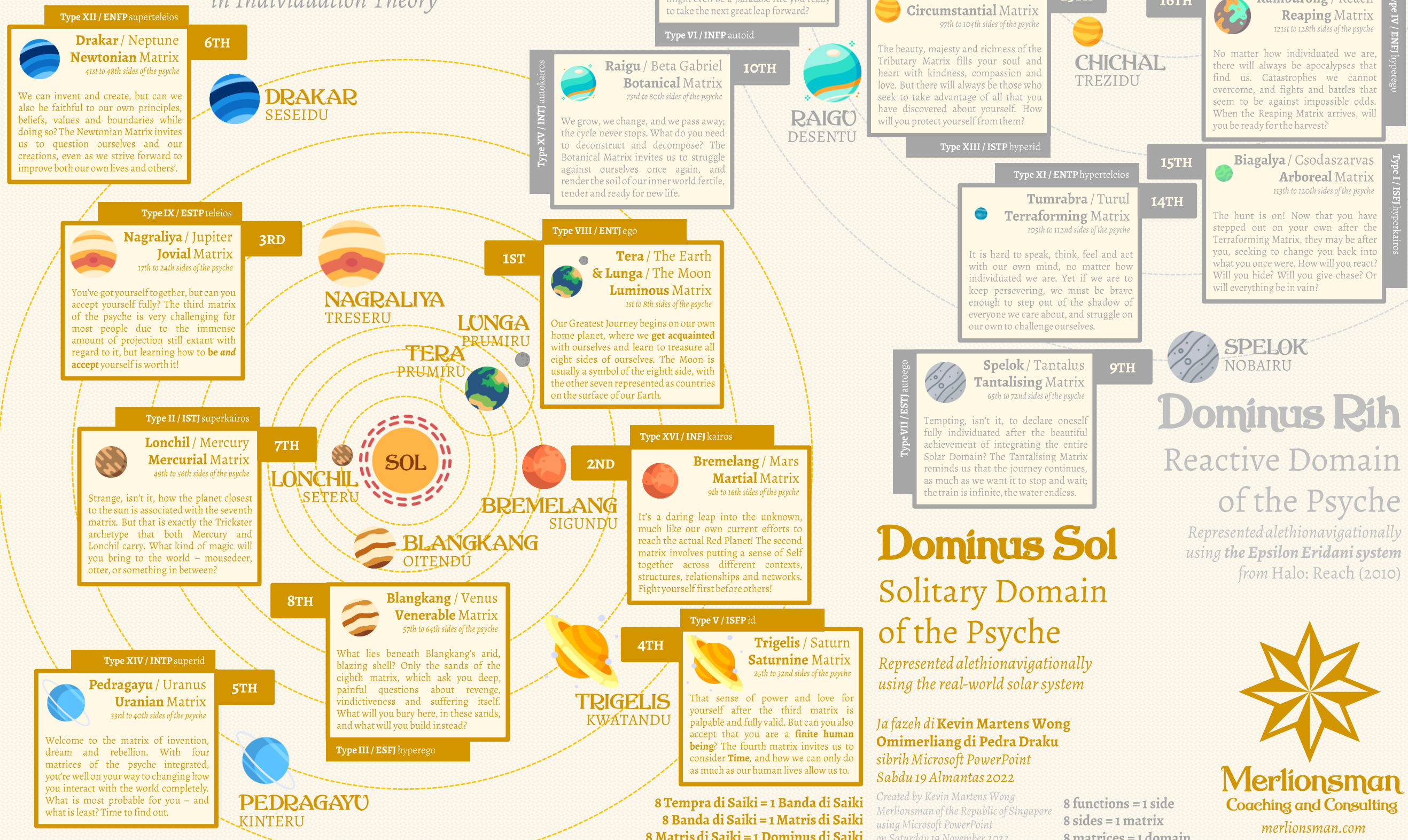


Karta

pra jenti teng / for people with Type VIII / ENTJ ego

Dominus Prumiru
kung Sigundu di Saiki *A Map of the First and Second Domains of the Psyche in Individuation Theory*



Type XII / ENFP superteleios
6TH
Drakar / Neptune
Newtonian Matrix
41st to 48th sides of the psyche
 We can invent and create, but can we also be faithful to our own principles, beliefs, values and boundaries while doing so? The Newtonian Matrix invites us to question ourselves and our creations, even as we strive forward to improve both our own lives and others'.

DRAKAR
SESEIDU

Type IX / ESTP teleios
3RD
Nagrاليا / Jupiter
Jovial Matrix
17th to 24th sides of the psyche
 You've got yourself together, but can you accept yourself fully? The third matrix of the psyche is very challenging for most people due to the immense amount of projection still extant with regard to it, but learning how to **be and accept** yourself is worth it!

NAGRALIYA
TRESERU

Type II / ISTJ superkairos
7TH
Lonchil / Mercury
Mercurial Matrix
49th to 56th sides of the psyche
 Strange, isn't it, how the planet closest to the sun is associated with the seventh matrix. But that is exactly the Trickster archetype that both Mercury and Lonchil carry. What kind of magic will you bring to the world – mousedeer, otter, or something in between?

LONCHIL
SETERU

Type XIV / INTP superid
5TH
Pedragayu / Uranus
Uranian Matrix
33rd to 40th sides of the psyche
 Welcome to the matrix of invention, dream and rebellion. With four matrices of the psyche integrated, you're well on your way to changing how you interact with the world completely. What is most probable for you – and what is least? Time to find out.

PEDRAGAYU
KINTERU

8TH
Blangkang / Venus
Venerable Matrix
57th to 64th sides of the psyche
 What lies beneath Blangkang's arid, blazing shell? Only the sands of the eighth matrix, which ask you deep, painful questions about revenge, vindictiveness and suffering itself. What will you bury here, in these sands, and what will you build instead?
Type III / ESFJ hyperego

BLANGKANG
OITENDU

Type VIII / ENTJ ego
1ST
Tera / The Earth & Lunga / The Moon
Luminous Matrix
1st to 8th sides of the psyche
 Our Greatest Journey begins on our own home planet, where we **get acquainted** with ourselves and learn to treasure all eight sides of ourselves. The Moon is usually a symbol of the eighth side, with the other seven represented as countries on the surface of our Earth.

TERA
PRUMIRU

LUNGA
PRUMIRU

Type XVI / INFJ kairos
2ND
Bremelang / Mars
Martial Matrix
9th to 16th sides of the psyche
 It's a daring leap into the unknown, much like our own current efforts to reach the actual Red Planet! The second matrix involves putting a sense of Self together across different contexts, structures, relationships and networks. Fight yourself first before others!

BREMELANG
SIGUNDU

Type X / ESFP autoteleios
11TH
Kaskung / Emese
Mesmerising Matrix
81st to 88th sides of the psyche
 Do you fear Death? There is no going any further if you have yet to conquer your fear of what awaits you if you were to lose everything and everyone that you care about, every part of yourself. What are you willing to sacrifice for others? And what will that change about you?

11TH

Makantra / Tribute
Tributary Matrix
89th to 96th sides of the psyche
 The name of the Matrix should say it all. Paying tribute to ourselves and honouring ourselves, every single part of us, both good and bad, is one of the hardest things that we will ever do. It might even be a paradox. Are you ready to take the next great leap forward?
Type VI / INFP autoid

RAIGU
DESENTU

Type XV / INTJ autokairos
10TH
Raigu / Beta Gabriel
Botanical Matrix
73rd to 80th sides of the psyche
 We grow, we change, and we pass away, the cycle never stops. What do you need to deconstruct and decompose? The Botanical Matrix invites us to struggle against ourselves once again, and render the soil of our inner world fertile, tender and ready for new life.

Type VIII / ENTJ ego

KASKUNG
ONZIDU

MAKANTRA
DOZIDU

13TH
Chichal / Circumstance
Circumstantial Matrix
97th to 104th sides of the psyche
 The beauty, majesty and richness of the Tributary Matrix fills your soul and heart with kindness, compassion and love. But there will always be those who seek to take advantage of all that you have discovered about yourself. How will you protect yourself from them?
Type XIII / ISTP hyperid

CHICHAL
TREZIDU

Type XI / ENTP hyperteleios
14TH
Tumrabra / Turul
Terraforming Matrix
105th to 112nd sides of the psyche
 It is hard to speak, think, feel and act with our own mind, no matter how individuated we are. Yet if we are to keep persevering, we must be brave enough to step out of the shadow of everyone we care about, and struggle on our own to challenge ourselves.

14TH

15TH
Biagalya / Csodaszarvas
Arboreal Matrix
113th to 120th sides of the psyche
 The hunt is on! Now that you have stepped out on your own after the Terraforming Matrix, they may be after you, seeking to change you back into what you once were. How will you react? Will you hide? Will you give chase? Or will everything be in vain?
Type I / ISFJ hyperkairos

SPELOK
NOBAIRU

Type VII / ESFJ autogogo
9TH
Spelok / Tantalus
Tantalising Matrix
65th to 72nd sides of the psyche
 Tempting, isn't it, to declare oneself fully individuated after the beautiful achievement of integrating the entire Solar Domain? The Tantalising Matrix reminds us that the journey continues, as much as we want it to stop and wait; the train is infinite, the water endless.

Dominus Rih
Reactive Domain
of the Psyche
Represented alethionavigationally using the Epsilon Eridani system from Halo: Reach (2010)

Dominus Sol
Solitary Domain
of the Psyche
Represented alethionavigationally using the real-world solar system

Ja fazeh di Kevin Martens Wong
Omimerliang di Pedra Draku
sibrih Microsoft PowerPoint
Sabdu 19 Almantas 2022

Created by Kevin Martens Wong
 Merlionsman of the Republic of Singapore
 using Microsoft PowerPoint
 on Saturday 19 November 2022

8 functions = 1 side
8 sides = 1 matrix
8 matrices = 1 domain



Merlionsman
 Coaching and Consulting
 merlionsman.com

8 Tempra di Saiki = 1 Banda di Saiki
8 Banda di Saiki = 1 Matris di Saiki
8 Matris di Saiki = 1 Dominus di Saiki