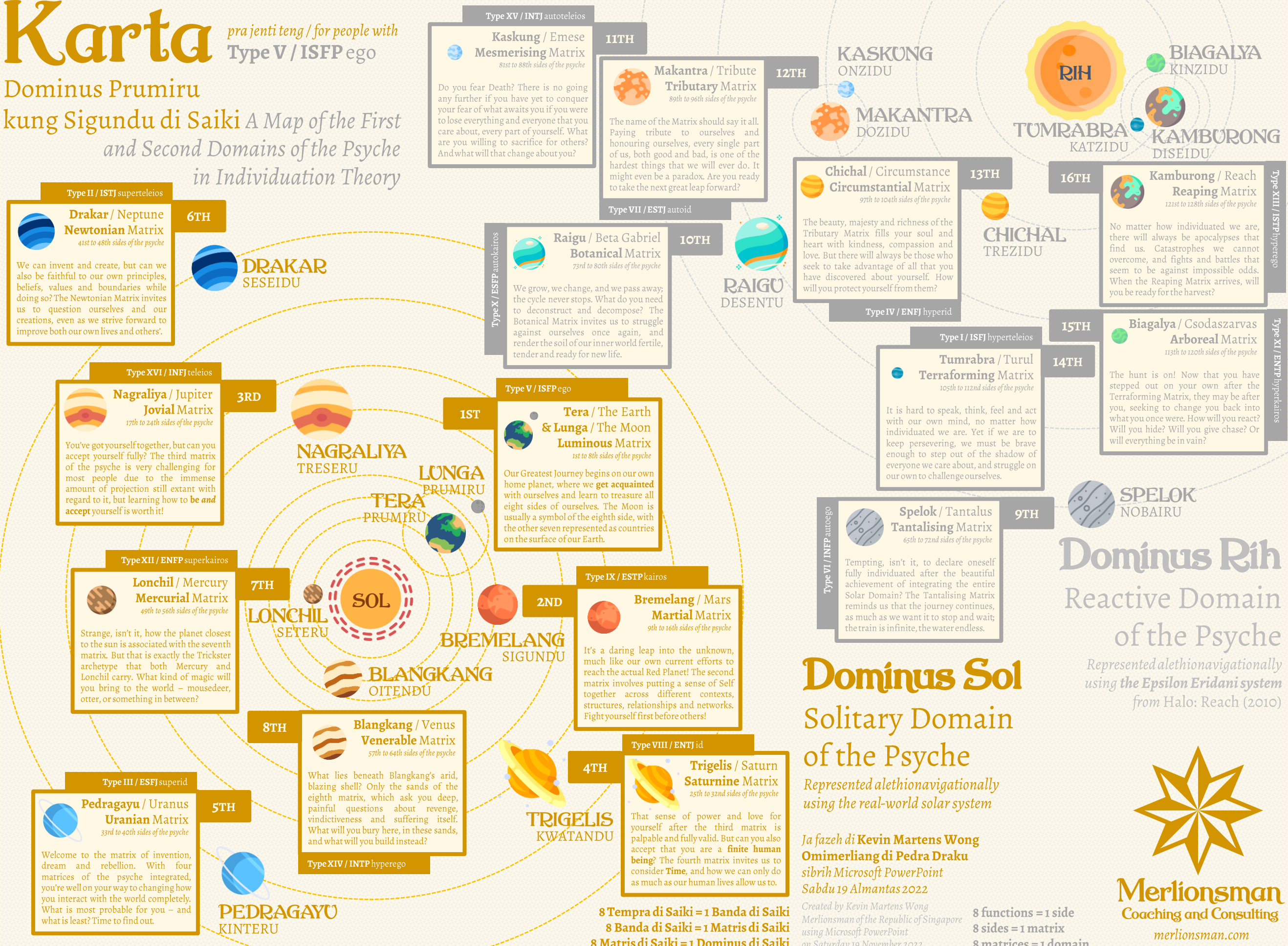


# Karta

*pra jenti teng / for people with Type V / ISFP ego*

Dominus Prumiru

kung Sigundu di Saiki *A Map of the First and Second Domains of the Psyche in Individuation Theory*



**Type XV / INTJ autoteleios**  
**Kaskung / Emese**  
**Mesmerising Matrix**  
*81st to 88th sides of the psyche*

Do you fear Death? There is no going any further if you have yet to conquer your fear of what awaits you if you were to lose everything and everyone that you care about, every part of yourself. What are you willing to sacrifice for others? And what will that change about you?

**11TH**  
**Makantra / Tribute**  
**Tributary Matrix**  
*89th to 96th sides of the psyche*

The name of the Matrix should say it all. Paying tribute to ourselves and honouring ourselves, every single part of us, both good and bad, is one of the hardest things that we will ever do. It might even be a paradox. Are you ready to take the next great leap forward?

**Type VII / ESTJ autoid**

**KASKUNG ONZIDU**  
**MAKANTRA DOZIDU**

**RIH**  
**TUMRABRA KATZIDU**  
**BIAGALYA KINZIDU**  
**KAMBURONG DISEIDU**

**16TH**  
**Kamburong / Reach**  
**Reaping Matrix**  
*121st to 128th sides of the psyche*

No matter how individuated we are, there will always be apocalypses that find us. Catastrophes we cannot overcome, and fights and battles that seem to be against impossible odds. When the Reaping Matrix arrives, will you be ready for the harvest?

**Type XIII / ISTP hyperrego**

**Type II / ISTJ superteleios**  
**Drakar / Neptune**  
**Newtonian Matrix**  
*41st to 48th sides of the psyche*

We can invent and create, but can we also be faithful to our own principles, beliefs, values and boundaries while doing so? The Newtonian Matrix invites us to question ourselves and our creations, even as we strive forward to improve both our own lives and others'.

**DRAKAR SESEIDU**

**Type X / ESFP autokairos**  
**Raigu / Beta Gabriel**  
**Botanical Matrix**  
*73rd to 80th sides of the psyche*

We grow, we change, and we pass away, the cycle never stops. What do you need to deconstruct and decompose? The Botanical Matrix invites us to struggle against ourselves once again, and render the soil of our inner world fertile, tender and ready for new life.

**RAIGU DESENTU**

**13TH**  
**Chichal / Circumstance**  
**Circumstantial Matrix**  
*97th to 104th sides of the psyche*

The beauty, majesty and richness of the Tributary Matrix fills your soul and heart with kindness, compassion and love. But there will always be those who seek to take advantage of all that you have discovered about yourself. How will you protect yourself from them?

**Type IV / ENFJ hyperid**

**CHICHAL TREZIDU**

**Type I / ISFJ hyperteleios**  
**Tumrabra / Turul**  
**Terraforming Matrix**  
*105th to 112nd sides of the psyche*

It is hard to speak, think, feel and act with our own mind, no matter how individuated we are. Yet if we are to keep persevering, we must be brave enough to step out of the shadow of everyone we care about, and struggle on our own to challenge ourselves.

**15TH**  
**Biagalya / Csodaszarvas**  
**Arboreal Matrix**  
*113th to 120th sides of the psyche*

The hunt is on! Now that you have stepped out on your own after the Terraforming Matrix, they may be after you, seeking to change you back into what you once were. How will you react? Will you hide? Will you give chase? Or will everything be in vain?

**Type XI / ENTP hyperkairos**

**Type XVI / INFJ teleios**  
**Nagraliya / Jupiter**  
**Jovial Matrix**  
*17th to 24th sides of the psyche*

You've got yourself together, but can you accept yourself fully? The third matrix of the psyche is very challenging for most people due to the immense amount of projection still extant with regard to it, but learning how to **be and accept** yourself is worth it!

**NAGRALIYA TRESERU**  
**LUNGA PRUMIRU**  
**TERA PRUMIRU**

**1ST**  
**Tera / The Earth & Lunga / The Moon**  
**Luminous Matrix**  
*1st to 8th sides of the psyche*

Our Greatest Journey begins on our own home planet, where we **get acquainted** with ourselves and learn to treasure all eight sides of ourselves. The Moon is usually a symbol of the eighth side, with the other seven represented as countries on the surface of our Earth.

**Type VI / INFP autotego**  
**Spelok / Tantalus**  
**Tantalising Matrix**  
*65th to 72nd sides of the psyche*

Tempting, isn't it, to declare oneself fully individuated after the beautiful achievement of integrating the entire Solar Domain? The Tantalising Matrix reminds us that the journey continues, as much as we want it to stop and wait; the train is infinite, the water endless.

**SPELOK NOBAIRU**

**Dominus Rih**  
 Reactive Domain  
 of the Psyche  
*Represented alethionavigationally using the Epsilon Eridani system from Halo: Reach (2010)*

**Type XII / ENFP superkairos**  
**Lonchil / Mercury**  
**Mercurial Matrix**  
*49th to 56th sides of the psyche*

Strange, isn't it, how the planet closest to the sun is associated with the seventh matrix. But that is exactly the Trickster archetype that both Mercury and Lonchil carry. What kind of magic will you bring to the world – mousedeer, otter, or something in between?

**LONCHIL SETERU**  
**SOL**  
**BREMELANG SIGUNDU**  
**BLANGKANG OITENDU**

**Type IX / ESTP kairos**  
**Bremelang / Mars**  
**Martial Matrix**  
*9th to 16th sides of the psyche*

It's a daring leap into the unknown, much like our own current efforts to reach the actual Red Planet! The second matrix involves putting a sense of Self together across different contexts, structures, relationships and networks. Fight yourself first before others!

**Dominus Sol**  
 Solitary Domain  
 of the Psyche  
*Represented alethionavigationally using the real-world solar system*

**8TH**  
**Blangkang / Venus**  
**Venerable Matrix**  
*57th to 64th sides of the psyche*

What lies beneath Blangkang's arid, blazing shell? Only the sands of the eighth matrix, which ask you deep, painful questions about revenge, vindictiveness and suffering itself. What will you bury here, in these sands, and what will you build instead?

**Type XIV / INTP hyperego**

**Type VIII / ENTJ id**  
**Trigelis / Saturn**  
**Saturnine Matrix**  
*25th to 32nd sides of the psyche*

That sense of power and love for yourself after the third matrix is palpable and fully valid. But can you also accept that you are a **finite human being**? The fourth matrix invites us to consider **Time**, and how we can only do as much as our human lives allow us to.

**Type III / ESFJ superid**  
**Pedragayu / Uranus**  
**Uranian Matrix**  
*33rd to 40th sides of the psyche*

Welcome to the matrix of invention, dream and rebellion. With four matrices of the psyche integrated, you're well on your way to changing how you interact with the world completely. What is most probable for you – and what is least? Time to find out.

**PEDRAGAYU KINTERU**

**8 Tempra di Saiki = 1 Banda di Saiki**  
**8 Banda di Saiki = 1 Matris di Saiki**  
**8 Matris di Saiki = 1 Dominus di Saiki**

*Ja fazeh di Kevin Martens Wong Omimerliang di Pedra Draku sibrih Microsoft PowerPoint Sabdu 19 Almantas 2022*

*Created by Kevin Martens Wong Merlionsman of the Republic of Singapore using Microsoft PowerPoint on Saturday 19 November 2022*

**8 functions = 1 side**  
**8 sides = 1 matrix**  
**8 matrices = 1 domain**



**Merlionsman**  
 Coaching and Consulting  
 merlionsman.com